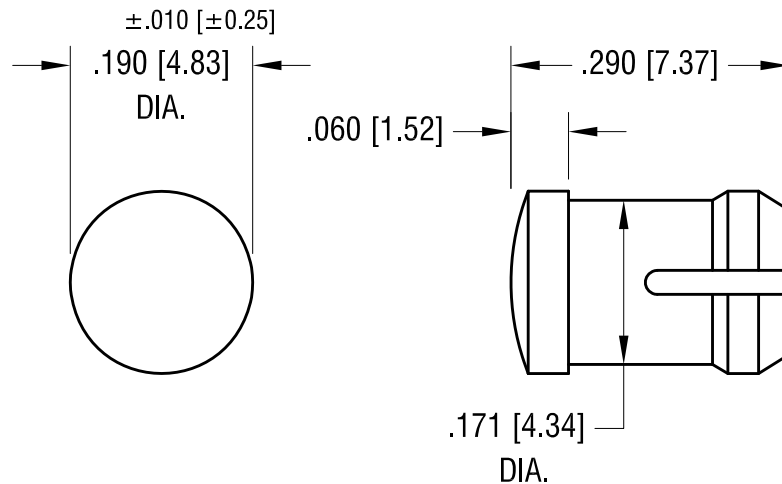


ACTUAL SIZE



**NOTE:**

1. MOUNTING:  $\pm .002$  [ $\pm 0.05$ ]  
MOUNTS IN A .171[4.34] DIA. PANEL HOLE  
ON .250 [6.35] CENTER.  
PANEL THICKNESS .063 [1.60] TO .125 [3.17]  
PANEL HOLE SHOULD BE DEBURRED, BUT NOT CHAMFERED.
2. ASSEMBLY:  
INSERT LENS THROUGH PANEL HOLE ,  
AND INSERT LED INTO LENS

PART NO.	COLOR
8656	RED
8657	GREEN
8658	YELLOW
8659	CLEAR

10.10.13	CHANGE AS PER ECN 13-098	A
DATE	DESCRIPTION	REV.

KEYSTONE ELECTRONICS CORP.			
www.keyelco.com • ASTORIA, N.Y. 11105-2017 • Tel (718) 956-8900			
PART NAME			
LED ROUND LENS CAP			
MATERIAL			
POLYCARBONATE			
FINISH		DRN BY	DATE
-		BOONE	2.9.96
		APP'D	SCALE
		LN	5X
TOLERANCES	INCH	[MM]	CODE
DECIMAL	$\pm .005$	[ $\pm 0.13$ ]	
ANGULAR	$\pm 1^\circ$		
UNLESS OTHERWISE SPECIFIED			DWG NO.
			C
			8656-8659